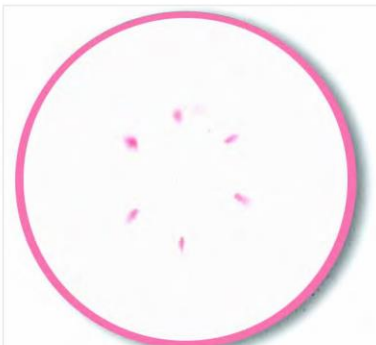


**CHLOR250 CHLOR S250 / CHLOR S700**

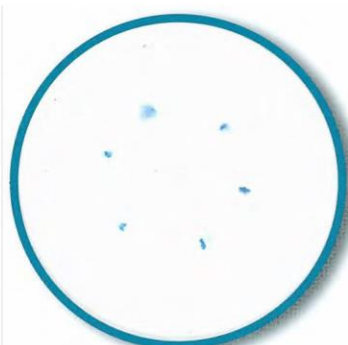
Microtracer RF Green Lake
Developer: 7% Sodium Carbonate in water

**MONTEBAN/MAXIBAN**

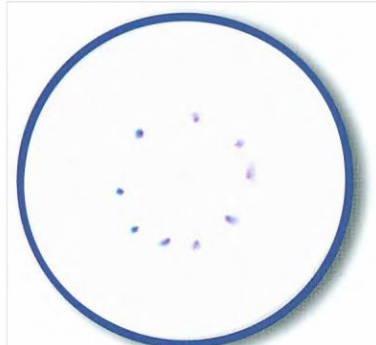
Microtracer F-Red #3
Developer: 50% alcohol & 1 drop of ammonia

**HUVEPHARAMA MONOVET/MONENSIN**

Microtracer F-Green #3/Yellow#6
Developer: 50% alcohol

**HUVEPHARMA NICARB**

Microtracer-FS Blue2
Developer: Deionized Water

**POSISTAC COXISTAC**

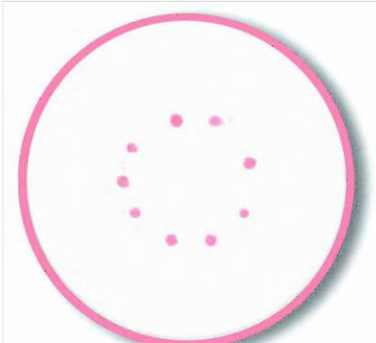
Microtracer FS-Violet (Red#3/Blue#1)
Developer: 50% alcohol & 1 drop of ammonia

**MONENSIN PREMIX**

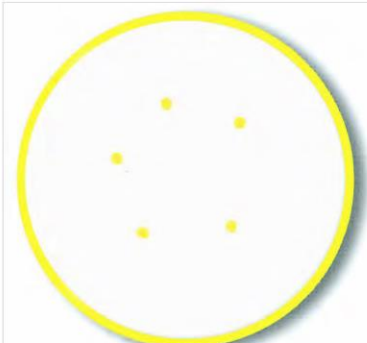
Microtracer RF Gold Lake
Developer: 7% Sodium Carbonate in water

**BIO-AGRI MIX NICARBAZIN**

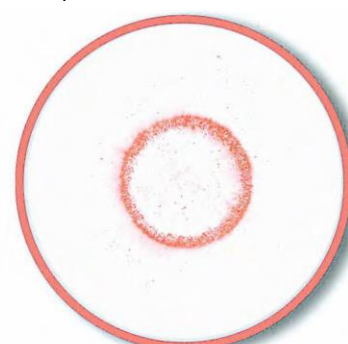
Microtracer RF-Natural Red Lake
Developer: 7% Sodium Carbonate in water

**COBAN/RUMENSIN**

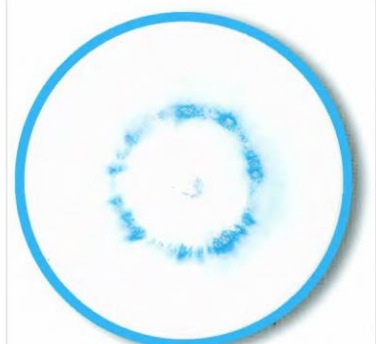
Microtracer-F-Red/Yellow Lake
Developer: 50% alcohol & 1 drop of ammonia

**SACOX and SALINOMYCIN 60 PREMIX**

Microtracer-F-Natural Yellow
Developer: 100% alcohol

**BIO-COX 120G**

Special Microtracer RF-Red#40 Lake
Developer: 7% Sodium Carbonate in water

**BIO-AGRI MIX RACTOPAMINE**

Microtracer RF-Natural Blue (Copper Carbonate)
Developer: 0.6% Cuprizone in 60% alcohol with ammonia